



EUROPEAN
COMMISSION

European
Research Area



Opportunities for European Research on Feed Safety

Food,
Agriculture and **F**isheries,
and **B**iotchnology
Knowledge-Based Bio-Economy (KBBE)

Dr Antonio DI GIULIO
Head of Unit E3 - Food, Health and Well-being
Directorate E - Food, Agriculture and Biotechnology
Directorate-General for Research
European Commission

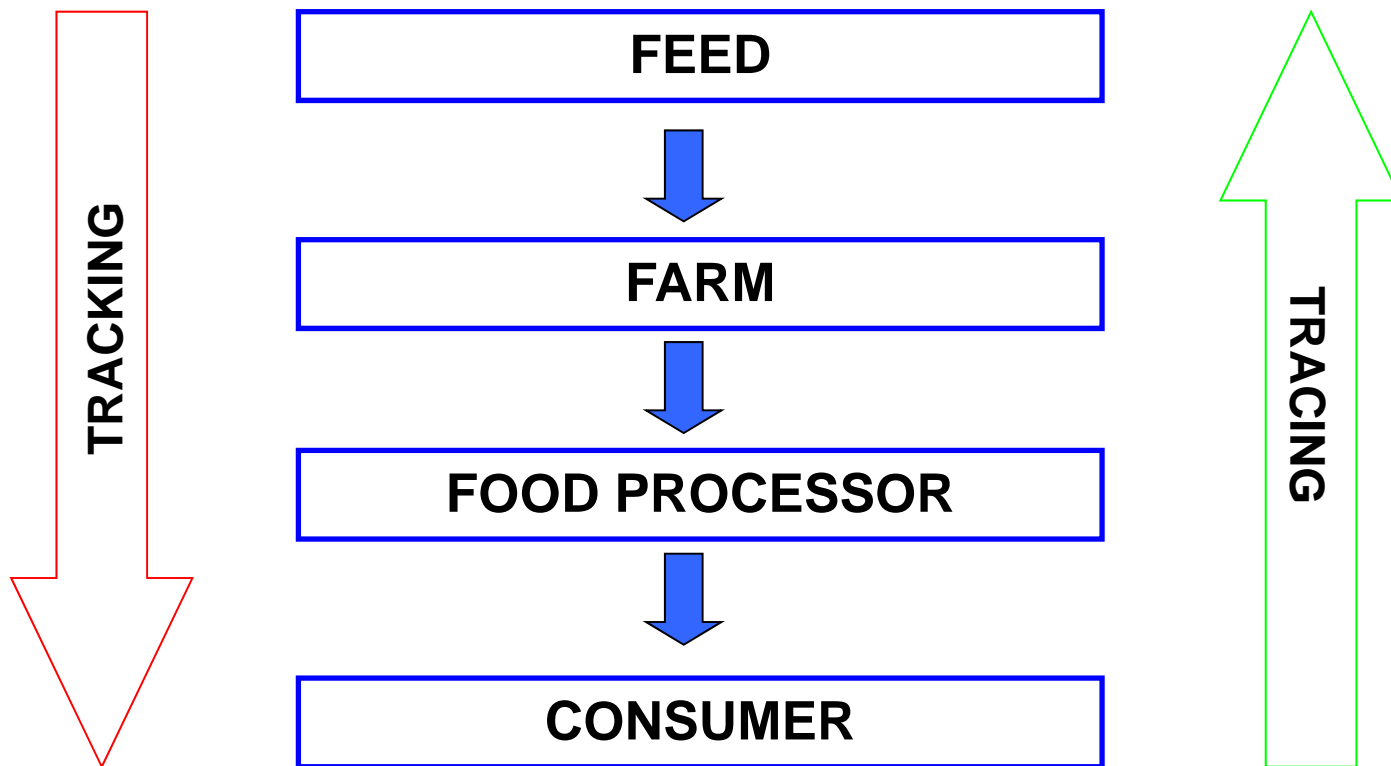


This presentation shall neither be binding nor construed as constituting a commitment by the European Commission

Outline

1. EC research responds to societal needs
2. Ongoing projects address key issues
3. New challenges in feed safety - the way forward

Feed in the total food chain





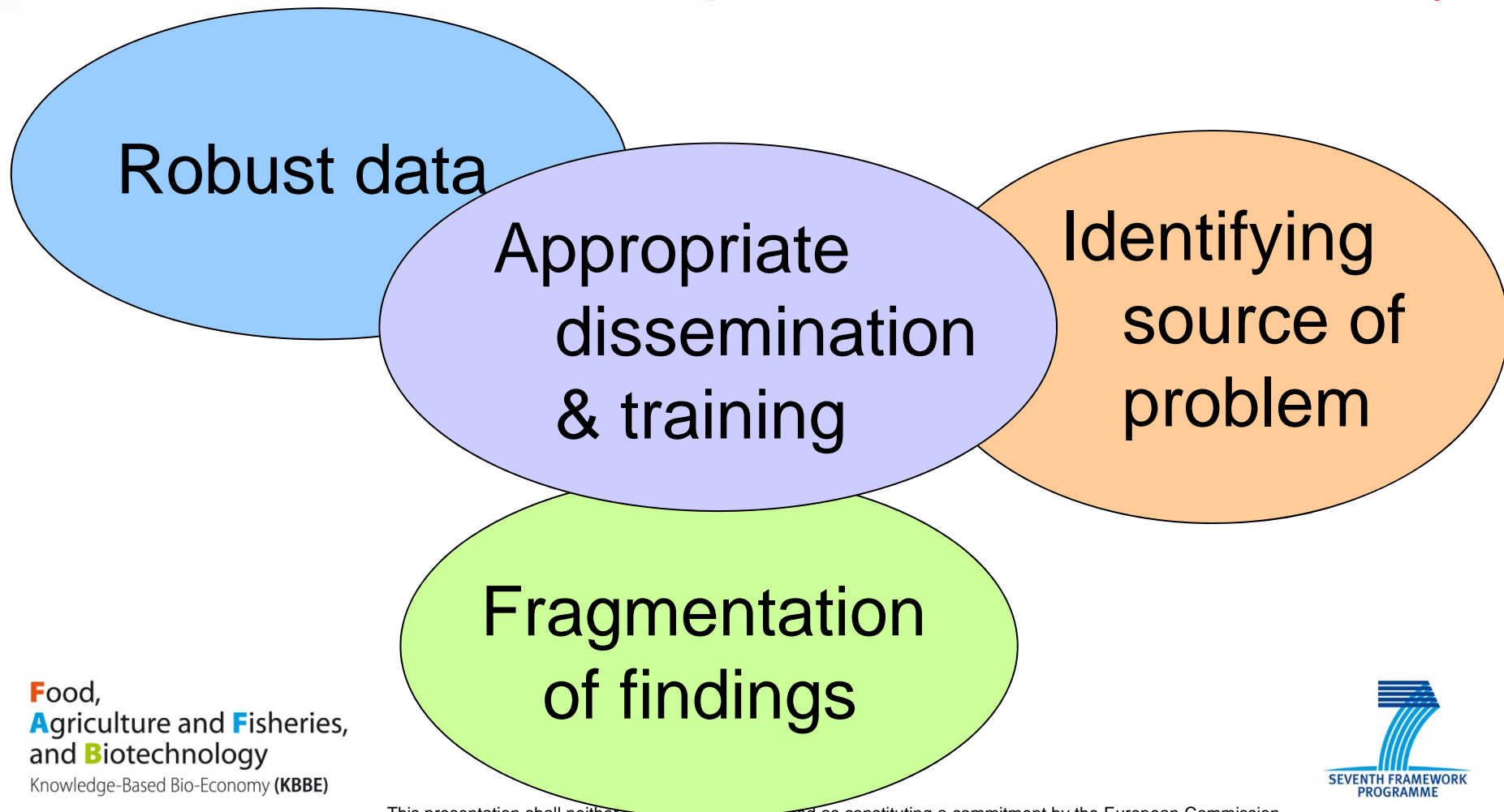
EUROPEAN
COMMISSION

European
Research Area

Not just a question of food safety...

- Consumers choice and food availability
- Farmers
- Food processors including SMEs
- International trade
- Economic and market losses

Challenges in translating science into policy: the example of food/feed safety





EUROPEAN
COMMISSION

European
Research Area

EC research responses

Food,
Agriculture and **F**isheries,
and **B**iotchnology

Knowledge-Based Bio-Economy (KBBE)



This presentation shall neither be binding nor construed as constituting a commitment by the European Commission



EUROPEAN
COMMISSION

European
Research Area

BSE/TSE crisis



Results: Quantification of traces and species specific identification of MBM in feed – TSE Road Map (amendment of extended feed ban)



Results: Mild decontamination procedure for MBM for a possible reintroduction in feed

Debate: Comparative study of risk perceptions and risk communications of stakeholders within Europe – TSE road map

Food,
Agriculture and Fisheries,
and Biotechnology
Knowledge-Based Bio-Economy (KBBE)





EUROPEAN
COMMISSION

European
Research Area

Public Health Issues



Results: Strategies and programs for salmonella control in feed



Results: Innovative bovine feeding strategies for meat with enhanced nutritional and eating quality characteristics

Food,
Agriculture and Fisheries,
and Biotechnology
Knowledge-Based Bio-Economy (KBBE)





EUROPEAN
COMMISSION

European
Research Area

Contaminants and risk assessment





EUROPEAN
COMMISSION

European
Research Area

Improving risk assessment of persistent organic pollutants



Results: Developed multidisciplinary analytical approaches
Proof of principle using bread and baby-food
Training future risk assessors



Results: New experimental data
Identification of biomarkers

Ongoing: Evaluation of effect and exposure

Food,
Agriculture and Fisheries,
and Biotechnology
Knowledge-Based Bio-Economy (KBBE)



Improving risk assessment: Methods and models



Results: Risk assessment of new food production systems
Indicators for emerging safety hazards in food/feed
Analysing stakeholder and institutional roles in risk analysis



Results: Have developed many new technologies for rapid detection of multiple food contaminants

Ongoing: Testing, validation and training



EUROPEAN
COMMISSION

European
Research Area

MYCORED –

reducing mycotoxins in food and feed chains worldwide

- optimization of plant resistance and fungicide use
- biocontrol to reduce toxigenic fungi in cropping systems
- modelling and development of a Decision Support System
- novel post-harvest and storage practices

Food,
Agriculture and Fisheries,
and Biotechnology
Knowledge-Based Bio-Economy (KBBE)

**International partners: Argentina, Turkey, Russia,
Egypt, Nigeria, Mexico, South Africa, Canada**



This presentation shall neither be binding nor construed as constituting a commitment by the European Commission



EUROPEAN
COMMISSION

European
Research Area



Confidence

- New simplified inexpensive detection methods for chemical contaminants from farm to fork (chemical safety and quality food supply).
- New detection tools for key- and emerging risks.
- Validation of risk benefit and predictive hazard behaviour models



EUROPEAN
COMMISSION

European
Research Area

EC research

EU
Publ
Research

Food,
Agriculture and **F**isheries,
and **B**iotecnology

Knowledge-Based Bio-Economy (KBBE)





EUROPEAN
COMMISSION

European
Research Area

New opportunities for research

Food,
Agriculture and **F**isheries,
and **B**iotchnology

Knowledge-Based Bio-Economy (KBBE)



This presentation shall neither be binding nor construed as constituting a commitment by the European Commission



EUROPEAN
COMMISSION

European
Research Area

FP7

Future
workprogrammes

Call 4
workprogramme



cordis.europa.eu

Food,
Agriculture and **F**isheries,
and **B**iotchnology
Knowledge-Based Bio-Economy (KBBE)



This presentation shall neither be binding nor construed as constituting a commitment by the European Commission



EUROPEAN
COMMISSION

European
Research Area

Food, **A**griculture and **F**isheries, and **B**iotechnology
K n o w l e d g e - B a s e d B i o - E c o n o m y (K B B E)

Work programme 2010

Call FP7-KBBE-2010-4

Publication date: 30 July 2009

Budget: 190 million €

Deadline: 14 January 2010

Evaluation: March/April 2010

Number of topics: 48

All proposals will be evaluated under the single-stage procedure

- **KBBE.2010.2.4-03: Quality and safety aspects of feed**
- **KBBE.2010.1.2-02: Sustainable organic and low-input dairy production**

Food,
Agriculture and **F**isheries,
and **B**iotechnology
Knowledge-Based Bio-Economy (KBBE)





EUROPEAN
COMMISSION

European
Research Area

Creating partnerships

Opportunities for increasing cooperation across EU, including candidate countries

- KBBE.2010.2.4-1: Improving integration in food safety research
 - Bottom-up collaborative research
- KBBE.2010.2.6-1: Strengthening cooperation in food safety research in the enlarged European union
 - Coordinating research activities and policies

Food,
Agriculture and Fisheries,
and Biotechnology
Knowledge-Based Bio-Economy (KBBE)





EUROPEAN
COMMISSION

European
Research Area

Tendencies

- New improved feeds
- Animal feeding and digestion in the mitigation of climate change
- Fish feeds and environmental sustainability
- Continue to improve safety, quality and traceability
- Known and emerging risks

EU can run world-class facilities

Bringing together partners from different backgrounds

Working in international consortia is more than doing research

European Added Value

The added value of co-working for users, academia and industry

Avoid unnecessary duplication of facilities and themes

Supports national, EU and international policy developments

Europe as a partner in international collaboration for mutual benefits

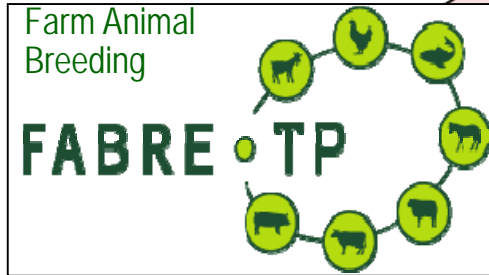
- Role of public research to respond to global challenges
- Cooperation with international partners
 - SICA instrument, but all of FP7 is open
 - Also Third Countries (USA, Australia, Canada etc)
 - Twinning mechanism
- Topics chosen according to current needs
 - S&T cooperation agreements
- Promotion of food chain approaches
 - Tackling global threats like climate change
- Objective-driven approach
 - Applied research & demonstration



EUROPEAN COMMISSION

European Research Area

European Technology Platforms (ETP)



KBBE



Food,
Agriculture and **F**isheries,
and **B**iotchnology
Knowledge-Based Bio-Economy (KBBE)



This presentation shall neither be binding nor construed as constituting a commitment by the European Commission

Conclusions

Assuring food safety by assuring feed safety:
Feed is a basis of the food chain

Investments in feed
research pays off



Opportunities for feed research at European level continues

EUROPEAN
COMMISSIONEuropean
Research Area

Food, Agriculture and Fisheries, and Biotechnology

Knowledge-Based Bio-Economy (KBBE)

www.cordis.europa.eu/fp7/kbbe/home_en.htm

EC Web sites...

EU research: www.europa.eu.int/comm/research

Sixth Framework Programme:

www.cordis.lu/fp6/home.html

www.cordis.lu/fp6/food.html

Seventh Framework Programme:

www.cordis.europa.eu/fp7/home.html

Information requests, Europe Direct

www.ec.europa.eu/research/index.pg=enquiries

DG Research Site:

www.europa.eu.int/comm/research/index_en.html

RTD info magazine:

www.europa.eu.int/comm/research/rtdinfo/

Food,
Agriculture and Fisheries,
and Biotechnology
Knowledge-Based Bio-Economy (KBBE)

